

State Income Tax

Based on Annual Ohio Taxable Income after Adjustments & Exemptions

2004-2013



Assumption that the Ohio Taxable Income - Line 5, is the same as gross wages for local taxes, which makes these figures conservative

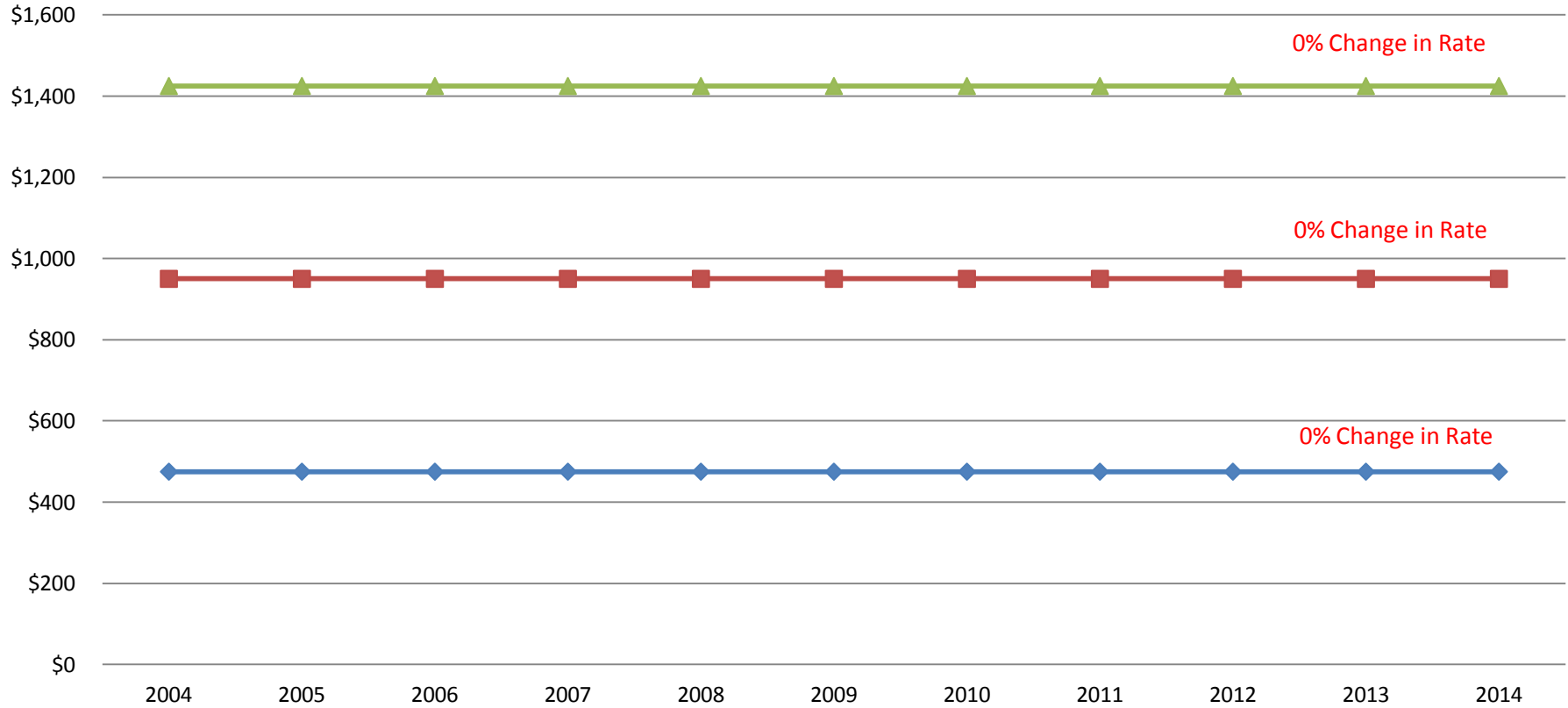
Change in State Support to Oberlin 2004-2014



◆ Local Government Fund 42% Decrease

■ Estate Tax 100% Decrease

Oberlin City Income Tax Based on Income - Same Rate of 1.9% 2004-2014



◆ \$25,000 Income ■ \$50,000 Income ▲ \$75,000 Income

State Income Tax & City Income Tax
Projecting State Tax Rates Stay the Same 2014 - 2016
Projecting an Increase in City Income Tax Rate to 2.5% in 2015

